







FP VARIABLE SPEED BOOSTER SET



-  Designed to provide cold potable water
-  Alternating start
-  Numerous installation options
-  Stainless Steel pipework
-  IP55 Control Panel
-  Inverters qualify for enhanced capital allowance scheme

INTRODUCTION

Flow Mech Products' FP variable speed booster sets are designed to deliver constant pressure water supply under widely variable flow demand. Sets are designed to suit the application. The frequency inverters are approved 100% under the enhanced capital allowance scheme.

BASE FRAME

Fabricated from mild steel box section of welded construction. The rigid frame extends beyond the pipework to provide both strength and protection to the unit. Paint finish is a durable blue gloss.

PIPEWORK

Suction and discharge manifolds can be stainless steel with isolating valves to each pump suction, isolating and non-return valves to each pump discharge, terminating in manifold valves.

PANEL

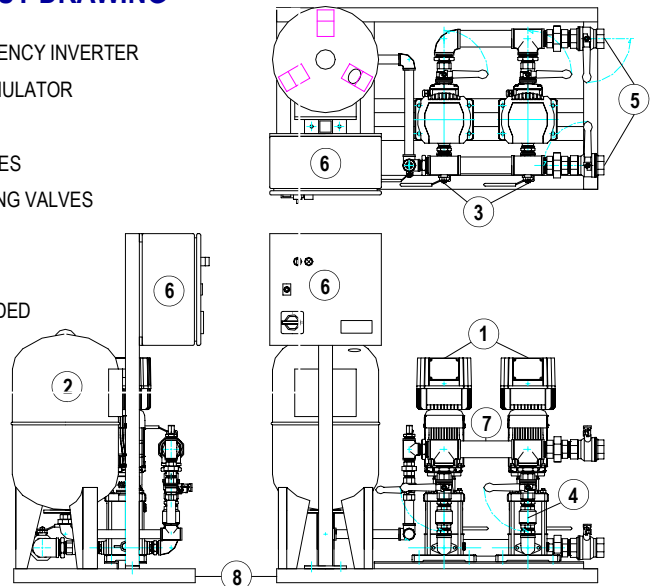
The panel will be IP55 protected. Terminal arrangements for:

- Low level cut-out
- Remote start/stop
- Volt free contacts for inventor trip
- All tested and set before leaving works

TYPICAL LAYOUT DRAWING

KEY

1. HYDROVAR FREQUENCY INVERTER
2. HYDRAULIC ACCUMULATOR
3. ISOLATION VALVES
4. NON RETURN VALVES
5. MANIFOLD ISOLATING VALVES
6. CONTROL PANEL
7. 316 S/S PIPEWORK
8. BOX SECTION WELDED BASEFRAME



Typical Hydrovar Inverter



HYDRAULIC ACCUMULATOR

Vessel constructed from mild steel with a powder coating finish, complete with replaceable rubber bladder and stainless steel flange.

PUMPS

Pumps are multistage or end suction and can be either vertical or horizontally mounted. All pumps are fitted with Hydrovar inverter drive control units.



Abbey House, Charter Street, Leicester. LE1 3UD
 Tel: 0116 242 5425. Fax: 0116 242 5555
 Email: sales@flowmech.co.uk www.flowmech.co.uk

The Company pursues a policy of continuous improvement and reserves the right to change detail and specification without prior notice